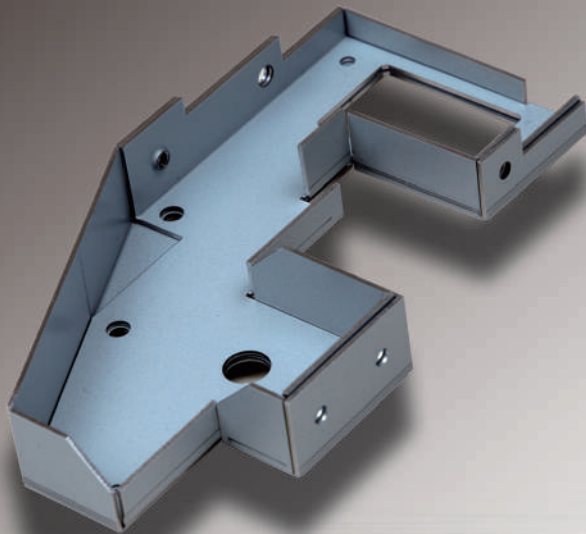


Ergonomic Servo Press Brake
for Processing of Small Components

EG 4010



High speed and High accuracy for small components

Ergonomic machine with new servo drive

Equipped with the world's first Dual Servo Press (DSP) drive, the EG-4010 offers high accuracy at 0.001mm and productivity up to 2.2 times higher than conventional machines.

NC with built-in CAM and *ergonomic design result in intelligent and comfortable processing. This leads to reduced lead time and easy operation.

*What is ergonomic design ?

· Ideal NC position reducing operator's burden · Ideal passline for comfortable work

Ergonomic servo press brake

EG-4010 debut !



EG-4010

Ergonomics

New technology

● High speed and high accuracy

New servo drive system DSP

Two motors for processing and power result in high speed and high pressure bending while saving energy.



● Intelligent processing

AMNC 3i

18.5" wide multi-touch LCD screen provides easy operation. Equipped with built-in CAM as standard feature.



● Comfortable working position

Ergonomic design

NC operation, tooling setup and work processing is all possible in a natural posture. Burden on the operator is thus reduced.



● Skill-free and high accuracy

Force control

Bend angle is controlled with bending pressure, which enables 90° bend without trial bend.



● Stable flexible gauging

New backgauge system

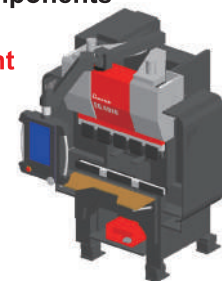
Two fingers operate separately to process small complex components with ease. Titanium-coated fingers improve gauging visibility.



● Processing of small components

Compact machine footprint

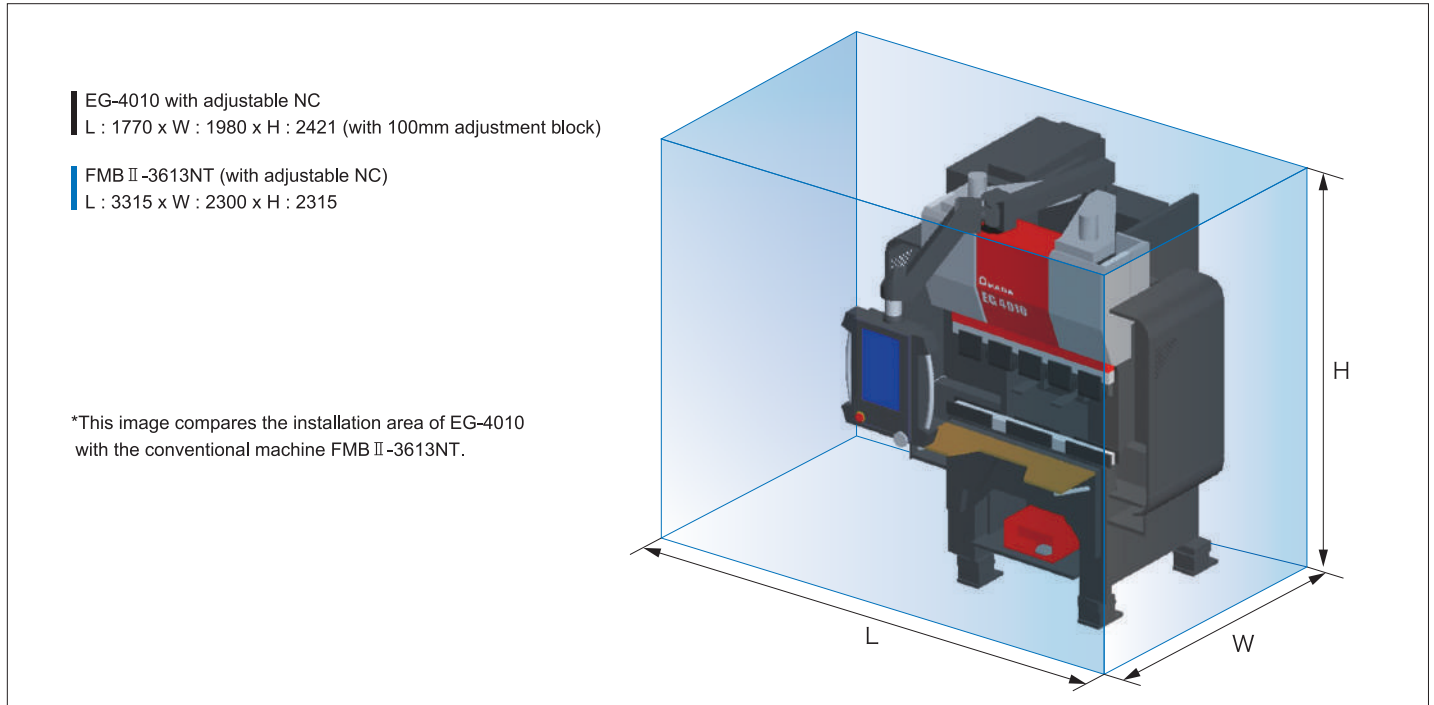
A compact and powerful machine that can be installed anywhere.



EG 4010

Machine area comparison

Unit : mm



Machine specifications

Model	EG-4010	
Total width L (with side guard)	mm	1770
Total height H	mm	2412 (with 100mm adjustment block)
Depth W	mm	1980 (when NC at front position)
Punch holder	AGRIP (Standard)	
Distance between frames	mm	710
Lower table height	mm	1030 (with 100mm adjustment block)
Table length	mm	1050
Open height	mm	420
Stroke length	mm	150
Tonnage capacity	kN	400
Motor power	kW	(1.8+0.85)×2
Number of axes	axes	2

Hydraulic oil capacity	L	—	
Machine weight	kg	2700	
Approach speed	mm/s	220	
Bending speed	mm/s	25	
Return speed	mm/s	220	
Beam tilt range (Left - right)	D-axis	mm	±2.0
	L-axis	mm	—
Backgauge - maximum gauging	mm	300	
Backgauge - vertical stroke	mm	50~200	
Backgauge - feed rate	m/min	L:60,Y:60,Z:20	
Power supply	mm ²	5.5	
Power requirement	kVA	2.8	

AMNC 3i specifications

Display method	18.5" wide multi-touch LCD screen	
CNC controlled axes	7-axis: D1, D2, L1, L2, Y1, Y2, Z	
Programming modes	Angle/Direct/2D/3D	
Process selection	Single stroke or inching (set by program)	
Minimum unit	mm	D-axis : 0.001, L-axis : 0.01, Y-axis : 0.1, Z-axis : 0.1
External connection terminal	2 USB ports	
Memory capacity	Max. 4GB	

⚠ For Your Safe Use
Be sure to read the operator's manual carefully before use.
 ● Use of this product requires safeguard measures to suit your work.

*Specifications, appearance, and equipment are subject to change without notice by reason of improvement.
 *The official model names of machines and units described in this catalog are EG4010.
 *Use these registered model names when you contact the authorities for applying for installation, exporting, or financing.
 *The hyphenated spellings EG-4010 are used in some portions of this catalog for sake of readability.
 *The specifications described in this catalog are for the Japanese domestic market.

© AMADA CO., LTD. All Rights Reserved.

AMADA CO., LTD.
 www.amada.co.jp

